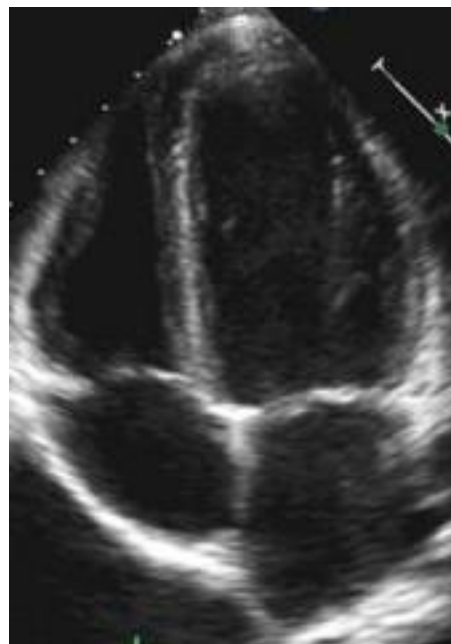


## Focused Intensive Care Echo (FICE) course

JFICMI Approved  
FICE (UK) Approved  
fice@ics.ac.uk



**Wednesday 17<sup>th</sup> October 2018**

As part of

## The IAEM Annual Scientific Meeting

08.00 hrs – 16.30 hrs

### Contacts:

Mr Tim Sillery: [Timothy.Sillery@hse.ie](mailto:Timothy.Sillery@hse.ie) (Registration & Payment)

Dr Cian McDermott & Dr. Catherine Nix (FICE Course Co-ordinators)  
[catherine.nix@ul.ie](mailto:catherine.nix@ul.ie);

**6 CME points from the College of Anaesthetists of Ireland**

**Training grades (250 euro); Consultants (350 euro)**



JFICMI

